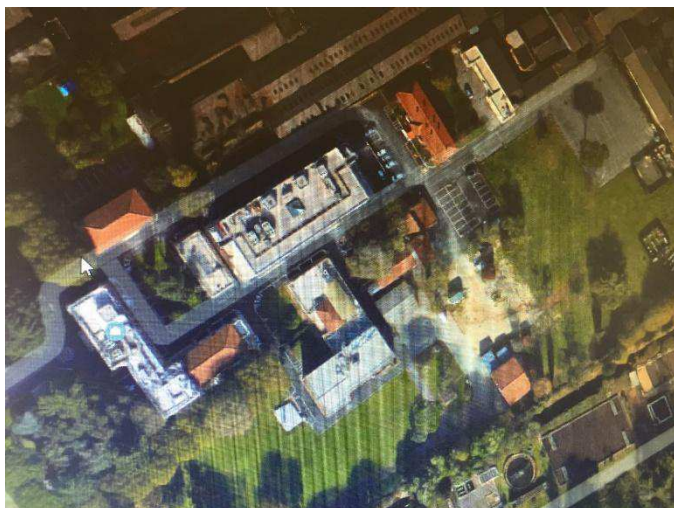




Istituto Zooprofilattico Sperimentale  
del Lazio e della Toscana *M. Aleandri*



## **THE IZS-LT SITES**

he headquarter is  
located in Rome  
(RM)

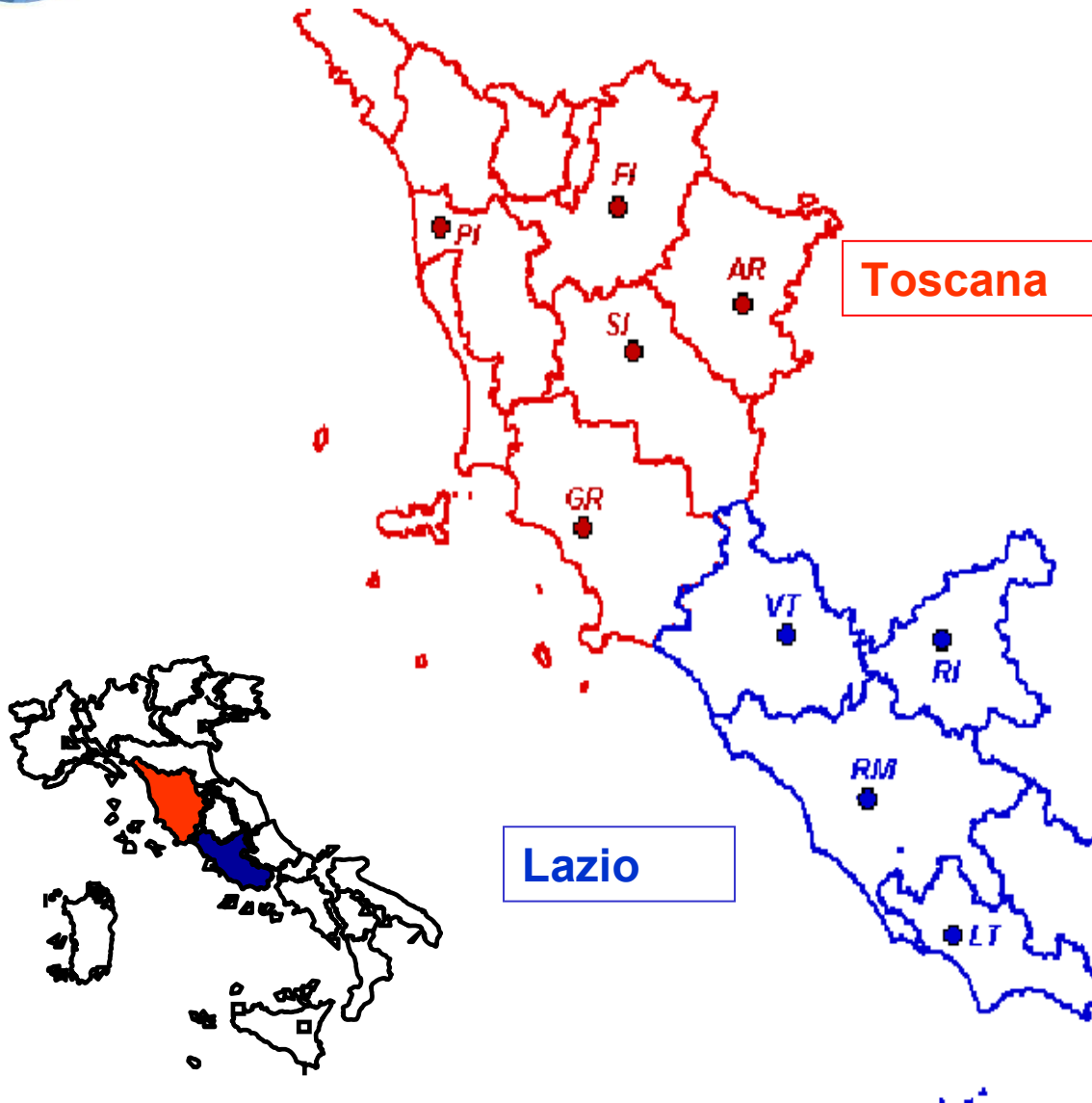
Diagnostic sites

Toscana Region:

Arezzo (AR),  
Florence (FI),  
Grosseto (GR), Pisa  
(PI), Siena (SI)

Lazio Region:

Latina (LT), Viterbo  
(VT) and Rieti (RI)



## Executive Officers

**CHIEF EXECUTIVE DIRECTOR** Dr. Ugo Della Marta **email:**  
[ugo.dellamarta@izslt.it](mailto:ugo.dellamarta@izslt.it)

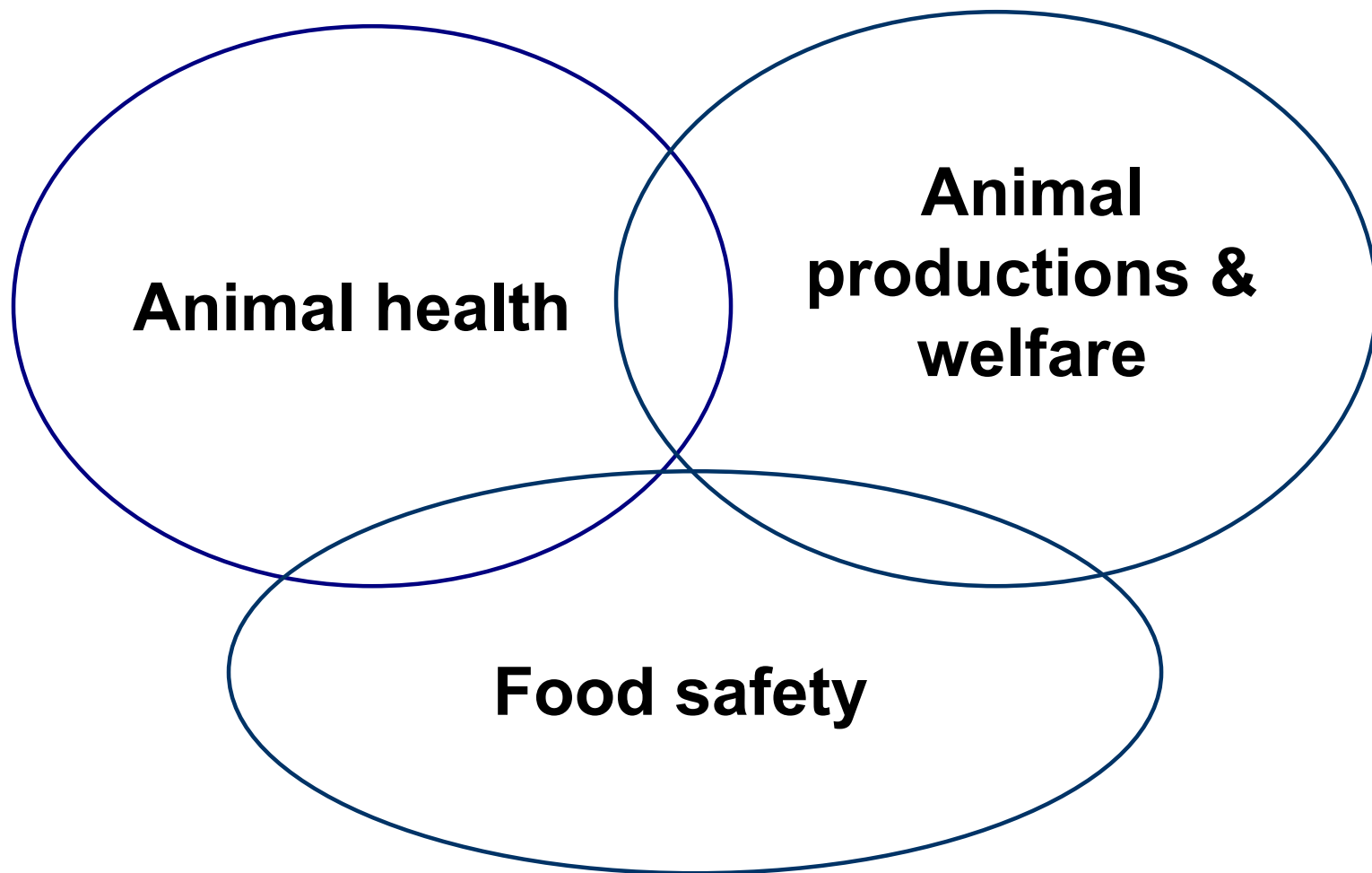
**VETERINARY EXECUTIVE DIRECTOR** Dr. Andrea Leto  
**email:** [andrea.letto@izslt.it](mailto:andrea.letto@izslt.it)

**MANAGING EXECUTIVE DIRECTOR** Dr. Mauro Pirazzoli  
**email:** [mauro.pirazzoli@izslt.it](mailto:mauro.pirazzoli@izslt.it)

ORGANIZATION CHART



## ***Our* MISSION**



## ***MAIN ACTIVITIES***

**Animal health diagnostic and laboratory activities**

**Food safety diagnostic and laboratory activities**

**Animal productions and welfare laboratory activities  
and counseling**





## **ON MAIN ACTIVITIES**

Assistance, training and information to farmers and food producers

Research

Continuous professional development and training

Epidemiological surveillance

Technical and scientific international co-operation

IT data management



## • **RESEARCH**

Research activity on behalf of Ministry of Health, other national, regional and local authorities as well as EU and international institutions, public and private stakeholder.  
(e.g. Transnationals– EFSA - H2020 calls)

## • **TRAINING**

Training unit is certified according to ISO 9001 and provides CPD programs and internships at national Local, Regional and EU level. It also provides services in Risk Communication to public.



# National and Regional Reference Centres and Labs

## NATIONAL

**NRC/NRL for Antimicrobial resistance**

**NRC/NRL for GMO (Official Controls)**

**NRC for Equine Diseases**

**NRC for Equine Infectious Anemia**

**NRC for Sheep and Goat Dairy  
Products Quality/Safety**

**NRC for Veterinary Forensic Medicine**

*Regional Reference Centre for  
Pathogenic Enterobacteria*

*Regional Reference Centre for Dairy  
Products Quality*

*Regional Veterinary Epidemiological  
Centre*

*Regional Centre for Food Safety Risk  
Analysis*

*Regional Laboratory for Bioterrorism  
Pathogens*







Istituto Zooprofilattico Sperimentale  
del Lazio e della Toscana *M. Aleandri*

## **We provides services for**

Lazio and Toscana Regions

Local Health Units of Lazio and Toscana Regions  
(Veterinary and Food Safety Local Services) – Districts

Ministry of Public Health

Farmers

Food and feedstuffs Producers

Private and public associations and organizations

Others (Ministry of Agriculture, UE, Office International des  
Epizooties, Food and Agricultural Organization)



## ***Our STAFF***

More than 500 people.

Veterinarians, biologists, chemists,  
laboratory technicians,  
agronomists, information technology  
and management support staff.





## **EQUIPMENT**

10 millions Eur worth of  
technical equipment  
to carry out routine  
and research activities





## **LABORATORY ACTIVITIES**

1,5 million/year analysis:  
bacteriological, virological,  
histological, serological,  
parasitological, biotechnological  
and chemical tests.

Performed under request of control  
bodies within Veterinary plans and  
Food Safety Services.

Food Business Operator according  
to own-checks and quality  
production programs can have  
access to some laboratory  
services.



## **QUALITY AND ACCREDITATION**

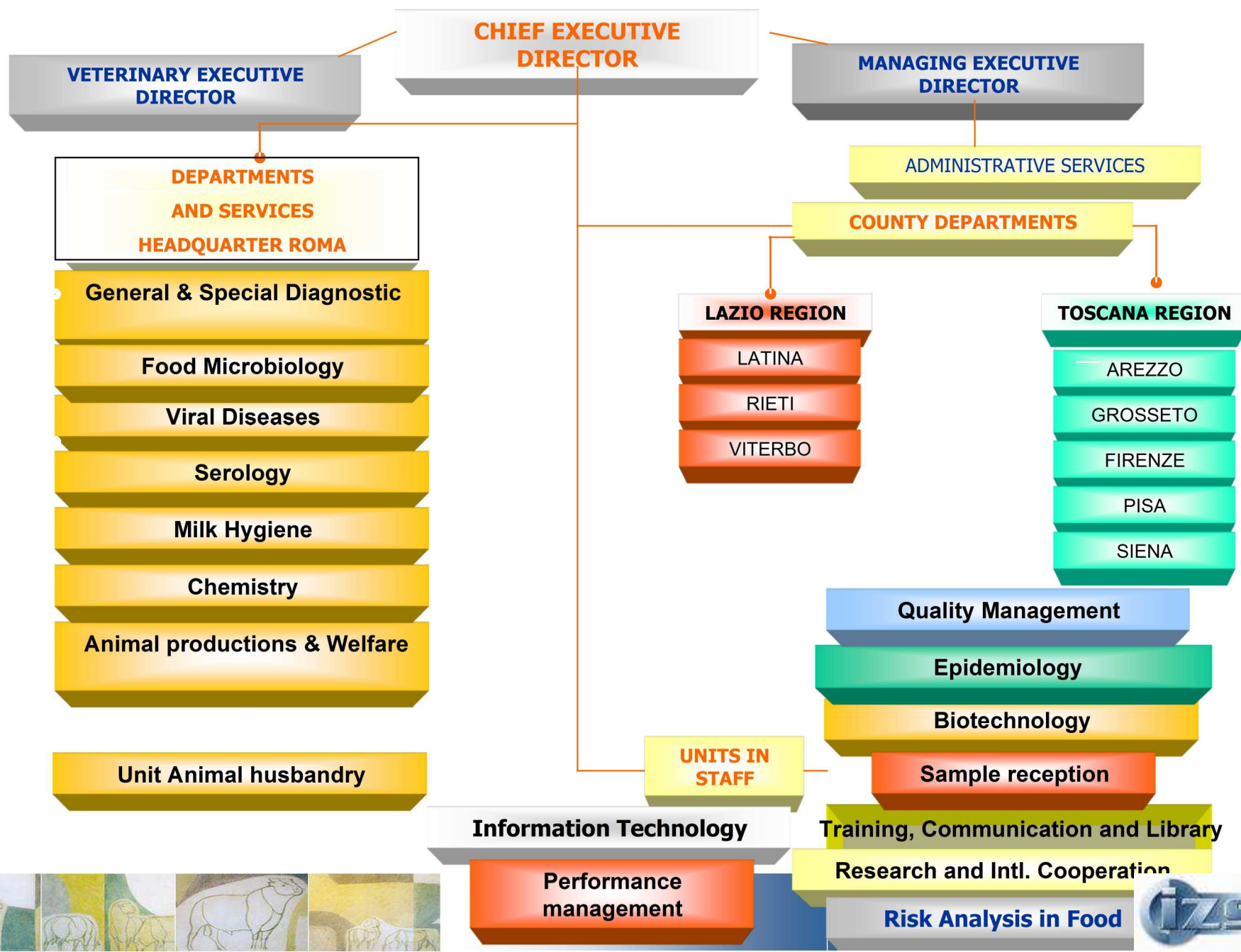
### **IZSLT policy since 1998**

Multisites laboratory accredited according to  
UNI CEI EN ISO/IEC 17025





# ORGANIZATION CHART





Istituto Zooprofilattico Sperimentale  
del Lazio e della Toscana *M. Aleandri*

## Istituto Zooprofilattico Sperimentale del Lazio e della Toscana M. Aleandri

Email : [info@izslt.it](mailto:info@izslt.it) |  
Certified Mail : [izslt@legalmail.it](mailto:izslt@legalmail.it)



<http://www.izslt.it/>

